

**利康居** 乃自負盈虧的輔助宿舍，於2005年11月正式投入服務，男女宿位共有47個，為具獨立生活能力的精神病康復者提供復康及住宿服務。

**Likang Court** is a self-finance supported housing established in November 2005 with a total capacity of 30 (both male and female) for providing rehabilitation services for more independent ex-mentally ill persons.

### 服務宗旨

- 促進社區精神健康及社區照顧服務
- 為精神及情緒受困擾人士提供支援及復康服務

### 目標

- 提供半獨立住宿環境予精神病康復者，讓其擁有更自由的空間
- 透過訓練及支援，為服務使用者融入社區獨立生活作準備

### 服務範圍

- 住宿服務
- 個別輔導
- 生活技能訓練
- 舍友及家屬資訊天地

### Aims

- To promote good community care practice in the field of mental health
- To provide support and rehabilitation services to people with mental and emotional disturbances

### Objectives

- To provide a supportive and autonomous living environment for ex-mentally ill persons
- To provide training and supporting services for the preparation of service users' independent living

### Services

- Residential service
- Individual counseling
- Social and living skills training
- Resource centre for residents and family members



屯門青麟路8號青麟山莊第三座  
Likang Court, Block 3, Greenery Villa, 8 Tsing Lun Road, Tuen Mun, N.T.  
電話 Telephone : (852)2466 1992  
傳真 Fax : (852)2478 6044  
電郵 Email : rflkc@richmond.org.hk  
網址 Website : www.richmond.org.hk

編訂日期 Edited in : 8/2011  
印製數量 Quantity : 500

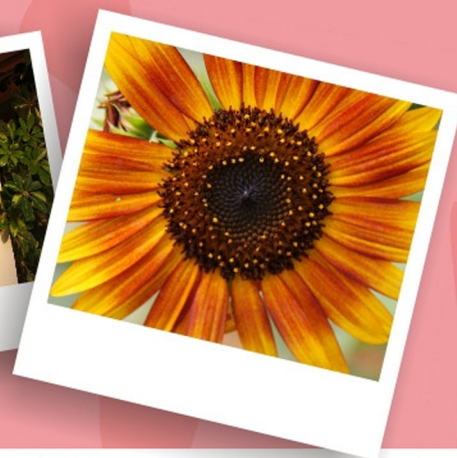


**利康居**  
Likang Court

輔助  
宿舍  
Supported  
Housing



本宿舍已領取『殘疾人士院舍豁免證明書』







利民·全人關顧  
Richmond Fellowship

with Love Lifestyle

## 申請條件 Eligibility Criteria

- 精神病康復者
- 年齡在15歲或以上，男女均可
- 具獨立生活及自理能力
- 精神狀況穩定及健康良好
- 無酗酒、吸毒、濫用藥物或嗜賭等習慣
- Ex-mentally ill persons
- Aged 15 or above, male or female
- Independent and with self-care ability
- Mentally stable and physically healthy
- Not addicted to alcohol, drugs or gambling



## 終止服務 Termination of Service

在以下情況，服務使用者會被終止服務：

- 經評估為未能在服務中獲益
- 嚴重破壞舍規，影響其他服務使用者生活或宿舍運作
- 病逝、身故、長期失蹤（超過一個月）
- 因復發或因病需長期留院超過一個月，而醫院方面未能確定出院時間

**Service will be terminated under the following circumstances:**

- For service users who cannot benefit from the service after assessment
- For service users who violate the house regulations
- Deceased or lost trace (over one month)
- Hospitalized without definite discharge schedule



## 收費 Fees

申請入住者須繳交指定收費

Residents are required to pay the stipulated fee charges

## 服務期限 Length of stay

按服務使用者個別需要而訂定

Subject to individual needs of service users



## 申請程序 Application Procedure

- 經社工轉介
- 郵寄或傳真已填妥的申請表格到利康居辦事處
- 需提供精神科醫生評估及X光肺片報告
- Referred by a social worker
- Mail or fax completed application form to the office of Likang Court
- Psychiatric assessment and Chest X-ray report should be provided

## 離舍及退出服務 Discharge or withdrawal of service

舍友離舍計劃是按其意向、個人健康狀況及專業人士等意見而作出安排。

Residents can request to leave the service based on their preference, health and professional comment.

